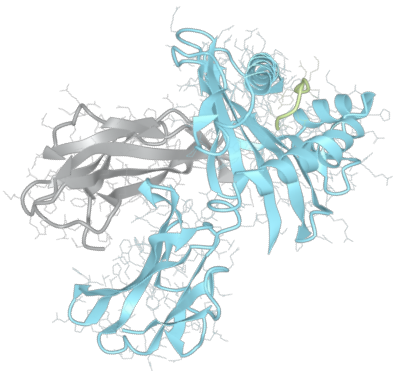


Product datasheet

sHLA-A*31:01bio

A*3101, A3101, A*31, A31, A31



Serological Name	A31
Peptide Load	Endogenous
Modification	Unmodified
Conjugation	Biotin
SKU	A3101bio

Product Description

Allele Name	A*31:01 B2m
HLA Class	HLA Class I
HLA Gene Locus	HLA-A
Alternative Allele Name A Chain	A*3101, A3101, A*31, A31, A31
Alternative Allele Name B Chain	-
Description	Recombinant, truncated Class I soluble Human Leukocyte Antigen (sHLA), naturally folded and glycosylated, loaded with endogenous peptides.
Serological Name	A31
Serological Split	A19
Bw4/Bw6 Assignment	-
Bw4/Bw6 Sequence	-
Allele Frequency [World Population]	
A chain	3.60%
B chain	-

Associated products

[A3101](#)
[A3101pe](#)

Product Specification

Product name	HLA-A*31:01bio
HLA Species	Human
Host Cell Line Species	Human
Clone Designation	G2E10
Tail Specification	VLDL
Peptide Load	Endogenous
Modification	Unmodified
Conjugation	Biotin
Complexity	Monomer
Protein Format	Recombinant, truncated, soluble, non-modified, biotinylated, endogenously loaded
Storage Temperature	4 °C (This product should be stored undiluted)
Form	Liquid
Concentration	300.0 µg/µl
Formulation	PBS/0.02% Sodium Azide
pH	7.4
Purification Method	Affinity Chromatography
Grade	Research Use Only [RUO]
Authentication Verification	Sequence Based Typing

Protein Sequences

Alpha Chain Sequence	GSHSMRYFTT SVSRPGRGEP RFIAVGYVDD TQFVRFSDSA ASQRMEPRAP WIEQERPEYW DQETRNVAH SQIDRVDLGT LRGYYNQSEA GSHTIQMMYG CDVGS DGRFL RGYQQDAYDG KDYIALNEDL RSWTAADMAA QITQRKWEAA RVAEQLRAYL EGTCVEWLR R YLENGKETLQ RTDPPKTHMT HHAVSDHEAT LRCWALSFPY AEITLTWQRD GEDQTQDTEL VETRPAGDGT FQKWASVVVP SGQEQRYTCH VQHEGLPKPL TLRVSVSTDD DLA
Beta Chain Sequence	IQRTPKIQVY SRHPAENGKS NFLNCYVSGF HPSDIEVDLL KNGERIEKVE HSDLSFSKDW SFYLLYYTEF TPTEKDEYAC RVNHVTL SQP KIVKWDRDM

Related Products

[A0201bio](#)
[A0301bio](#)
[A2402bio](#)
[B0702bio](#)

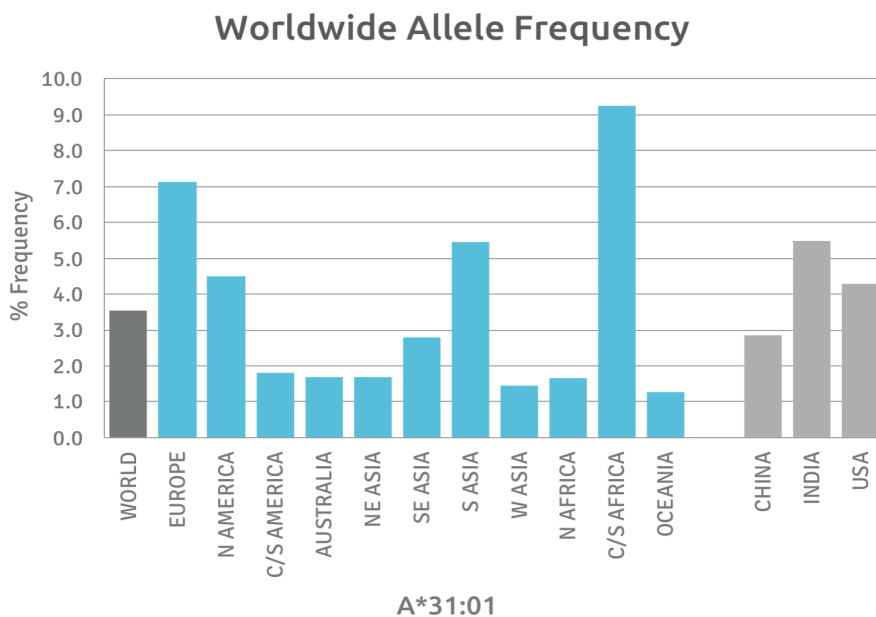
Applications

HLA Sandwich ELISAs
 HLA Direct ELISAs
 HLA-Sera Antibody Assays
 HLA Controls in ELISA Assays
 HLA Assay Standards
 HLA Blocking Assays
 HLA Neutralizing Assays
 HLA Competition Assays
 HLA Bead Assays
 HLA Immunization Procedures

Recommended Antibodies

W6/32
 Anti-B2m

Allele Frequency



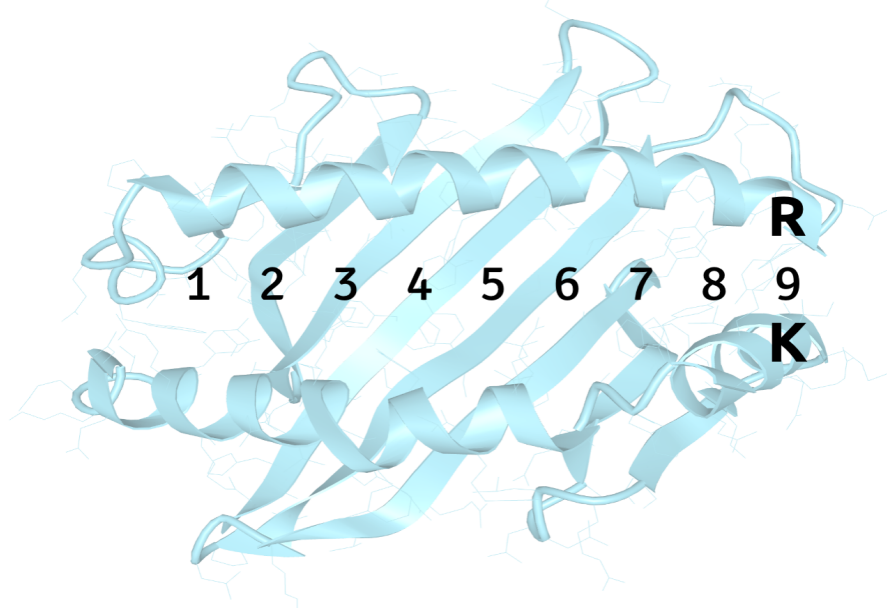
Please note:
 ALL PRODUCTS ARE FOR RESEARCH USE ONLY. NOT FOR COMMERCIAL USE IN DIAGNOSTIC PROCEDURES.
 For more information, please visit our Policies section on our website. For licensing inquiries, please contact

licensing@hlaprotein.com



Motif

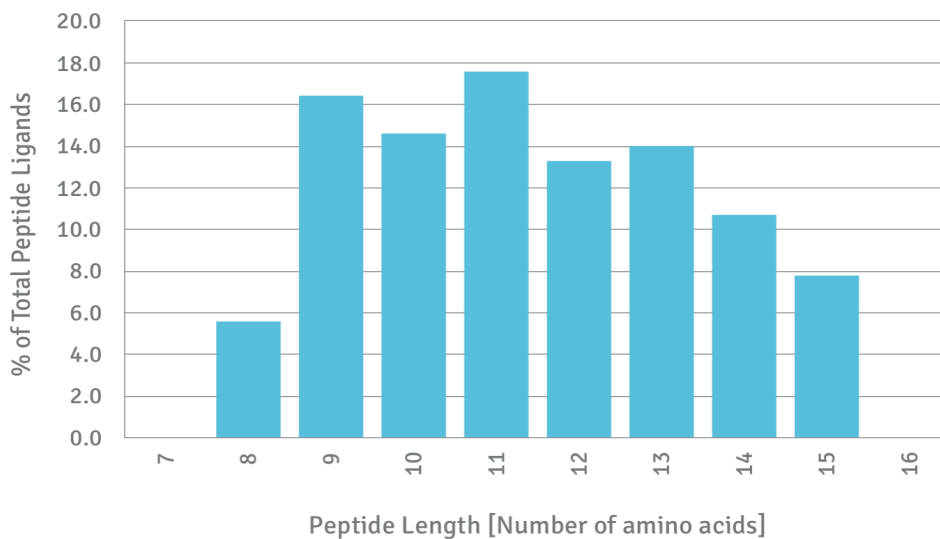
A*31:01 BINDING MOTIF



Length Distribution

HLA Length Distribution

A*31:01



Please note:

ALL PRODUCTS ARE FOR RESEARCH USE ONLY. NOT FOR COMMERCIAL USE IN DIAGNOSTIC PROCEDURES.

For more information, please visit our Policies section on our website. For licensing inquiries, please contact

licensing@hlaprotein.com

Eplet Assignments

A*31:01

Eplet	Polymorphic Residues	Antibody Reactivity
9T	9T	
44RM	44R45M	
44RME	44R45M46E(67V)	
56R	56R	Yes
62QE	62Q63E	Yes
65RA	65R69A	
65RNA	65R66N69A	Yes
66N	66N	
66NH	66N70H	
66NV	66N67V	
71HS	70H71S	
73ID	73I77D	
76VDT	76V77D80T	
77D	77D	
79GT	79G80T	Yes
80T	80T	
80TL	80T81L	
95I	95I	
97M	97M	
99Y	99Y	
105S	105S	
109F	109F	
114Q	114Q	
116D	116D	
138MI	138M142I	Yes
151ARV	150A151R152V	
152V	152V	
156L	156L	
163T	163T	
193AV	193A194V	
194V	194V	
207S	207S	
245AS	245A246S	
253Q	253Q	Yes